

# **Economic Crisis and Internal Migration of Foreign-Born in Spain**

**Joaquín Recaño-Valverde**

Email: jrecano@ced.uab.es

Universitat Autònoma de Barcelona

Centro de Estudios Demográficos, Edifici E2

Campus de la Universitat Autònoma de Barcelona

08193 Bellaterra (Barcelona)

Spain

Phone: + (34) 93.581.30.60

Fax: + (34) 93.581.30.61

## **Abstract**

Spain, a country of emigration for decades, has rapidly become one of the world's main countries of immigration. In January 2013, Spain hosted 6.6 million foreign-born persons, according to the population register; they represented 14.1 per cent of the total population of Spain.

This paper describes the repercussion of the change in the economic cycle on the migration processes of the foreign-born population in Spain, adding an approximation into the recent flows of immigration, their settlement processes in the territory and their subsequent internal/domestic geographic mobility. In sum, it consists of an analysis of all the migratory processes, which are taken into account as an interrelated unit, which responds to the recent economic situations, that are radically different from those experimented during the last decade, when the immigration boom and the redistribution of the foreign population along the territory coincided with a phase of continuous economic expansion. This paper describe the internal mobility of the foreign-born population in the recent times of crisis, identifying the new socio-demographic and territorial factors that explain it, dedicating a special attention to residential mobility and also the mobility that is related to the work market and closely associated to those movements of medium and large distance, so as to observe which migratory processes consolidate and which ones revert. The study of all these differentiated processes by nationality/place of birth will be, at all time, compared to what happens with the Spanish population, which will be considered as the group of reference.

The analysis is based on data from the Population Register Microdata files (Residential Variation Statistics) which provide information on individuals changing place of residence by basic demographic characteristics (citizenship, age, gender, country of birth and origin and destination of internal migration) for the period 1998-2012 and the *Padron Continuo* which provide information about population at risk by sex, age and country of birth for the period 1998-2013..

**Keywords:** Internal Migration Foreign Population Economic Crises Spain

## Data and methods

The data on internal migration used in this study come from the Estadística de Variaciones Residenciales (Statistics of Residential Variation - EVR). The data correspond to period 1998-2012. This source registers all the changes of municipality linked to the management of the municipal register of inhabitants and provides information on the citizenship of those moving, as well as about other demographic and geographic characteristics (origin and destination of move, distance, among other). Information on the number of foreigners, used to calculate migration rates for the annual quarter 1998-2013 period, comes from the Padrón Continuo (Continuous Register).

We calculate the Gross Migration Rate (GMR) for different categories. We also build up the profiles by age and sex. The GMR is analogous to the gross fertility rate in that it is the sum of age specific migration intensities and it is interpreted as the mobility a person would experience in his life if he or she followed the pattern observed at a specific time point (by sex, age and whatever variables are considered to compute the rates). It measures the intensity of migration between two regions at a particular point in time (Willekens and Rogers 1986). In its simplest form it is defined as:

$$GRM = \sum_{x=0}^z m_{x,x+n},$$

where  $m_{x,x+n}$  are the age-specific migration rates or transition probabilities. This is way of standardizing age and gender structure that is sensitive to the starting and ending ages of summation (Bell, Blake et al. 2002).

## Preliminary Results

Table 1. Economic Crisis and Internal Migration. *Gross Migration Rates (GMR) by Sex and Region of Birth. Spain 2008-2012*

Country of birth	Intra-provincial migration							
	Men		Women		Men	Women	Sex ratio	
	1Q 2008	4 Q 2012	1Q 2008	4 Q 2012	Variation	Variation	1Q 2008	4 Q 2012
Spain	1,46	1,31	1,53	1,29	-10,6%	-15,8%	0,96	1,02
EU-15	1,97	1,58	2,01	1,55	-19,7%	-23,0%	0,98	1,02
Rest of Europe	2,78	2,01	2,98	2,60	-27,5%	-12,8%	0,93	0,77
Maghreb	4,02	3,28	3,43	3,09	-18,4%	-9,9%	1,17	1,06
Sub-Saharan Africa	2,76	2,52	3,17	2,82	-8,6%	-11,1%	0,87	0,89
Latin	3,86	3,16	4,15	3,47	-18,1%	-16,4%	0,93	0,91
Asian	4,92	3,49	3,80	3,00	-29,1%	-21,1%	1,29	1,16
Country of birth	Interprovincial migration							
	Men		Women		Men	Women	Sex ratio	
	1Q 2008	4 Q 2012	1Q 2008	4 Q 2012	Variation	Variation	1Q 2008	4 Q 2012
Spain	0,95	0,91	0,96	0,87	-4,3%	-9,3%	0,99	1,04
EU-15	1,20	0,97	1,13	0,97	-19,4%	-14,0%	1,06	1,00
Rest of Europe	2,28	1,44	2,06	1,47	-36,8%	-28,6%	1,10	0,98
Maghreb	4,44	2,96	3,40	2,46	-33,2%	-27,5%	1,31	1,20
Sub-Saharan Africa	3,53	3,94	3,01	2,97	11,7%	-1,3%	1,17	1,33
Latin	2,97	2,19	2,96	2,13	-26,2%	-28,0%	1,00	1,03
Asian	4,86	4,27	3,50	2,90	-12,2%	-17,1%	1,39	1,47

Source: Own elaboration. *EVR and Padron Continuo* micro-data

Table 2. Changes in distances of internal migration by Region of birth and sex, Spain 2007-2011

Region of birth	Men		Women	
	<25 km	>200 Km	<25 km	>200 Km
Spain	-5,73%	0,91%	-6,08%	-4,94%
EU – 15	-26,28%	-21,97%	-22,55%	-19,84%
Rest of Europe	-33,50%	-45,60%	-15,72%	-24,26%
Maghreb	-11,73%	-27,98%	13,54%	-2,97%
Sub-Saharan Africa	13,37%	-11,26%	13,36%	-12,54%
Latin	-10,47%	-25,90%	-1,61%	-20,98%
Asian	5,31%	11,15%	20,41%	19,38%
Total	-8,36%	-9,79%	-5,54%	-8,90%

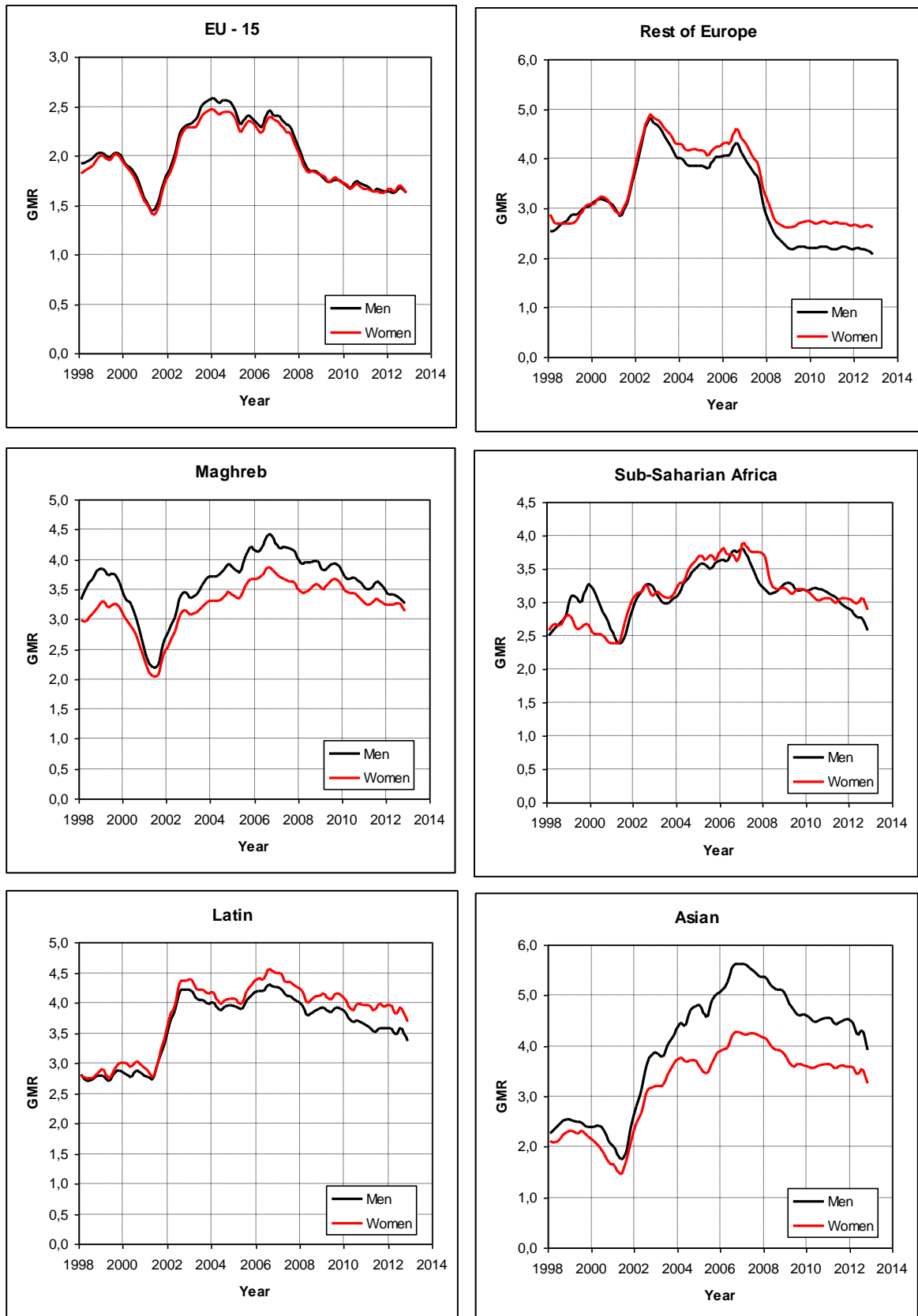
Source: Own elaboration. EVR micro-data

Figure 1. Distances of Internal Migration by Region of Birth. Spain, 1998-2012



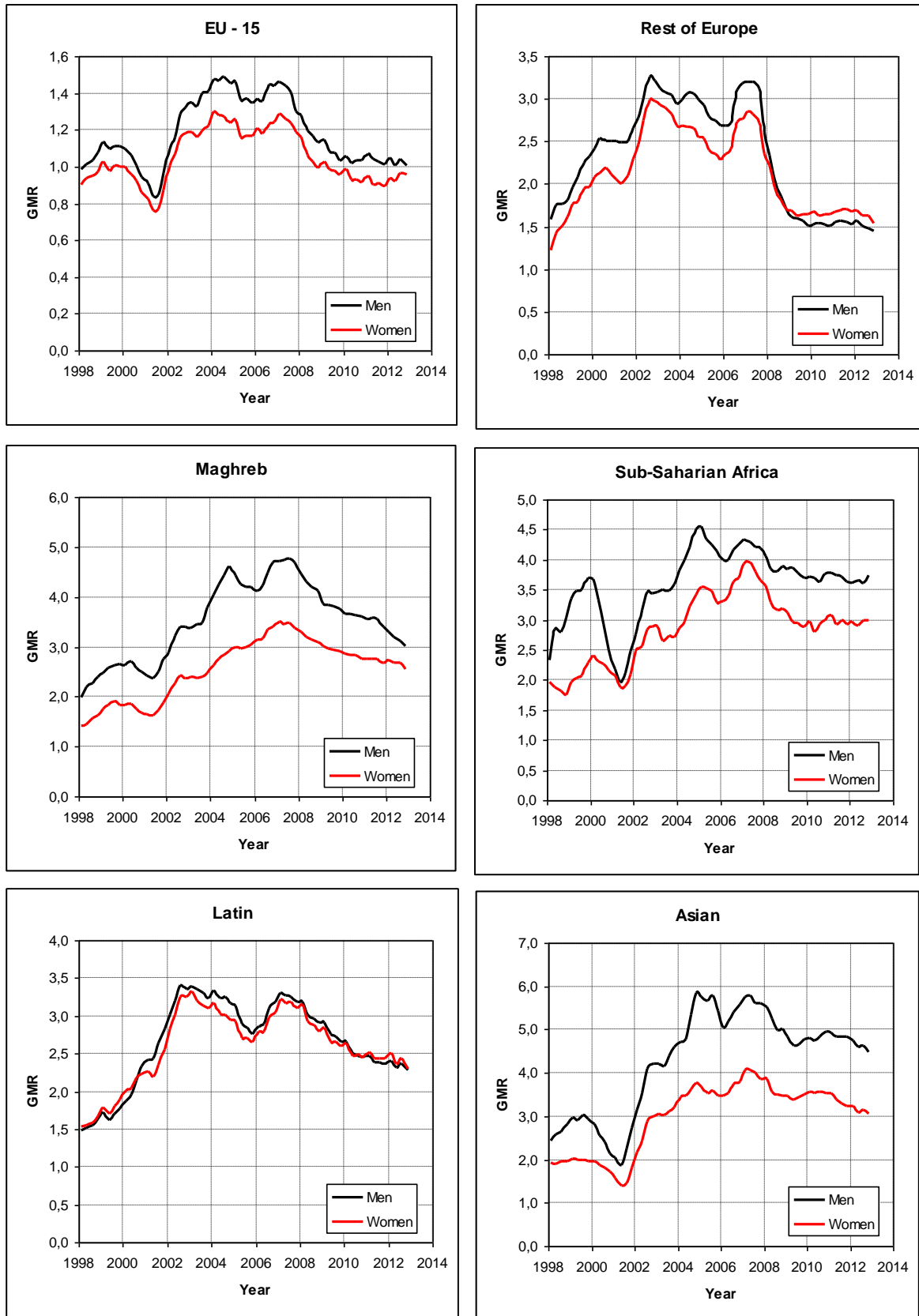
Source: Own elaboration. EVR micro-data

Figure 2: Intra-provincial GMR by sex and region of birth. Spain, 1998-2012.



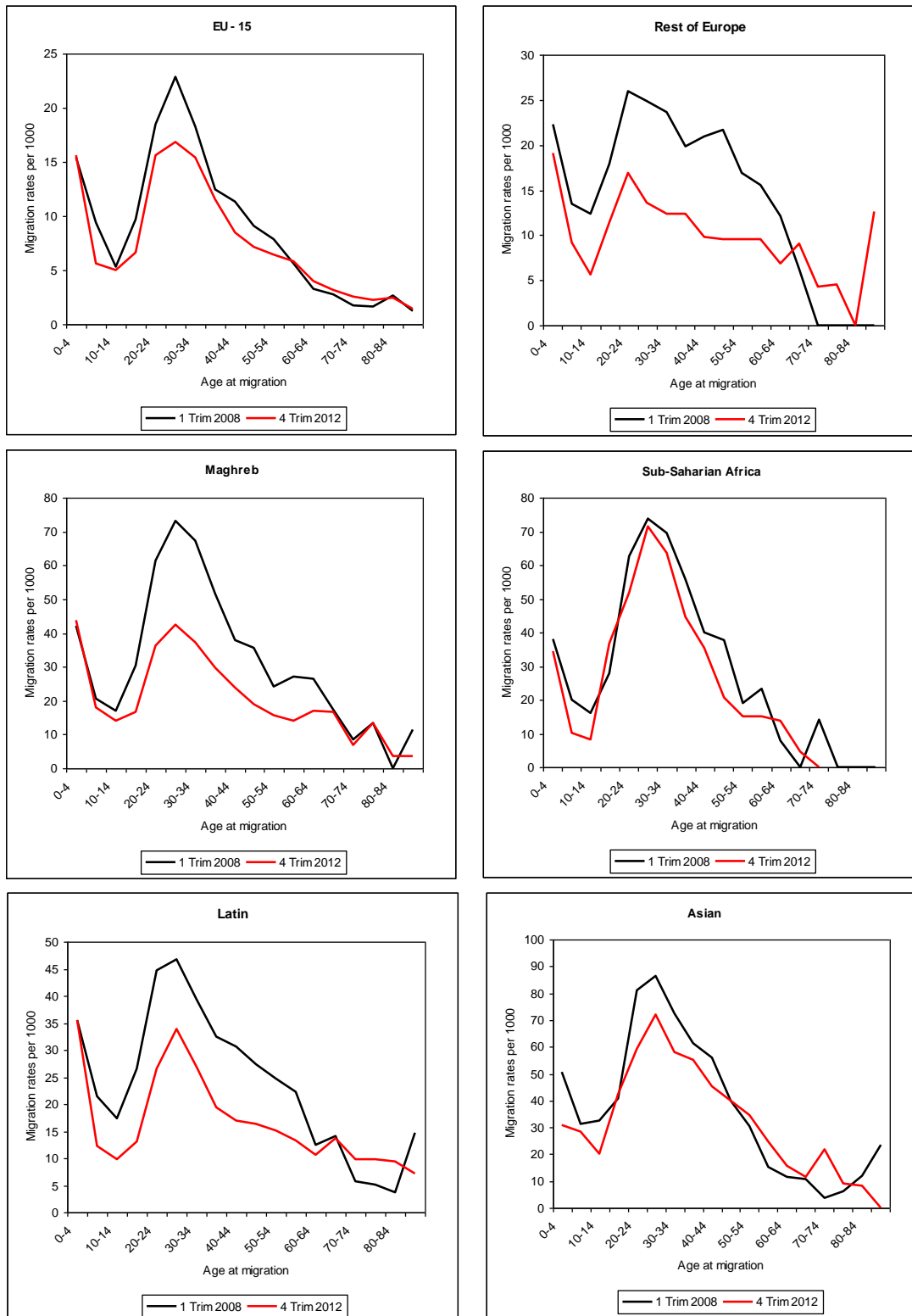
Source: Own elaboration. *EVR and Padrón Continuo* micro-data

Figure 3: Interprovincial GMR by sex and region of birth. Spain, 1998-2012



Source: Own elaboration. *EVR and Padrón Continuo* micro-data

Figure 4: Migration rates by age (internal migration > 200 km). Males. Spain, 2008(1Q)-2012(4Q)



Source: Own elaboration. *EVR and Padrón Continuo* micro-data

## References

- Aja, E. and Arango, J. (Eds). 2006. *Veinte años de inmigración en España*. Barcelona: CIDOB.
- Arango, J. 2000. Becoming a Country of Immigration at the End of the Twentieth Century: the Case of Spain. In R. King, G. Lazaridis and C. Tsardanidis (eds) *Eldorado or Fortress? Migration in Southern Europe*, Macmillan, London: 253-276.
- Bartel, A. P. 1989. Where do the new U.S. immigrants live? *Journal of Labor Economics*, 7(4), 371-91.
- Bartel, A. P. and Koch, M. J. 1991. Internal Migration of US Immigrants. In Abowd, J. M. and Freeman, R.B. (Eds.) *Immigration, Trade, and the Labor Market*. Chicago: The University of Chicago Press. 121-134.
- Bell, M and Muhidin, S. 2009. Cross-National Comparisons of Internal Migration. *Human Development Research Paper 2009/30*. United Nations Development Programme Human Development Reports Research Paper
- Bell, M. and Rees, P. 2006. Comparing migration in Britain and Australia: harmonisation through use of age-time plans. *Environment and Planning A*, 38(5), 959-988
- Bell, M.; Blake M.; Boyle, P.; Duke-Williams, O.; Rees, P.; Stillwell, J. and Hugo, G. 2002. Cross-national comparison of internal migration: issues and measures. *Journal of the Royal Statistical Society A*, 165(3), 435-464
- Bilsborrow, R. E. 1993. Issues in the Measurement of Female Migration in Developing Countries”, in United Nations *Internal Migration of Women in Developing Countries*, New York, United Nations, 116-130
- Corgeau, D. 1973a. Migrants et migrations. *Population*, 28(1), 95-129.
- Corkill, D. 2001. Economic migrants and the labour market in Spain and Portugal. *Ethnic and Racial Studies*. 24(5), 828-844
- Courgeau, D. 1973b. Migrations et découpages du territoire. *Population*, 28(3), 511-538.
- De Miguel, V.; Solana, M. and Pascual, À. 2007. Las redes de Apoyo: el tejido social básico para la acomodación de los extranjeros. Madrid: Fundación BBVA
- Domingo, A. and Recaño, J. 2010. La inflexión del ciclo migratorio internacional en España: impacto y consecuencias demográficas, in *La inmigración en tiempos de crisis. Anuario de la Inmigración en España*, edited by E. Aja, J. Arango and J. Oliver. Barcelona: Fundació CIDOB.
- Finney, N. and Simpson, L. 2008. Internal migration and ethnic groups: evidence for Britain from the 2001 Census. *Population, Space and Place*, 14: 63-83.
- Frey, W.H. 1995. Immigration and internal migration "flight" from U.S. metropolitan areas: toward a new demographic balkanisation. *Urban Studies*. 32(4-5), 733-57
- García-Coll, A. and Stillwell, J. 1999. Inter-provincial migration in Spain: Temporal trends and age-specific patterns. *International Journal of Population Geography*, 5(2), 97-115.
- Gurak, D. T. and Kritiz, M. M. 2000. The interstate migration of U.S. immigrants: individual and contextual determinants. *Social Forces*. 78,1017-1039.
- Hugo, G.J. 1993. Migrant Women in Developing Countries. In United Nations *Internal Migration of Women in Developing Countries*. New York, United Nations, 47-73
- King, R. and Zontini, E. 2000. The role of gender in the South European immigration model. *Papers. Revista de Sociologia*. 60, 35-52
- King, R., Fielding, A. and Black, R. 1997. The International Migration Turnaround in Southern Europe, in *Southern Europe and the New Immigrants*, edited by R. King and R. Black. Portland: Sussex Academic Press, 1-25.
- Krahn, H. and Derwing, T.M. 2005. The Retention of Newcomers in Second and Third-Tier Canadian Cities. *International Migration Review*. 39(4), 872-894.

- Kritz, M. M. and Gurak, D. T. 2001. The impact of immigration on the internal migration of natives and immigrants. *Demography*. 38(1), 133-145.
- Kritz, M. M. and Nogle, J. M. 1994. Nativity Concentration and Internal Migration among the Foreign-Born. *Demography*. 31(3), 509-524.
- Liaw, K.L. and Frey, W.H. 1998. Destination choices of the 1985-90 young adult immigrants to the United States: importance of race, educational attainment, and labour market forces. *International Journal of Population Geography*, 4(1), 49-61.
- Long, J.F. and Boertlein, C.G. 1990. Comparing migration measures having different intervals. *Current Population Reports, Series P-23*, 1-11. Washington DC: US Bureau of the Census.
- Mocetti, S. and Porello, C. 2010. How does immigration affect native internal mobility? New evidence from Italy. *Regional Science and Urban Economics*. 40, 427-439
- Muñoz-Pérez, F. and Izquierdo, A. 1989. L'Espagne, pays d'immigration. *Population*. 44(2), 157-289.
- Newbold, K. B. 1996. Internal migration of the foreign-born in Canada. *International Migration Review*. 30(3), 728-47.
- Nogle, J. M. 1994. Internal migration for recent immigrants to Canada. *International Migration Review*. 28(1), 31-48.
- Recaño J. and Roig, M. 2006. The internal mobility of foreigners in Spain. Paper presented to the 2006 EAPS Conference, Liverpool, June 2006
- Recaño, J. 2003. La movilidad geográfica de la población extranjera en España: un fenómeno emergente. *Cuadernos de Geografía*, 72, 135-156.
- Recaño, J. and Domingo, A. 2006. Evolución de la distribución territorial y la movilidad geográfica de la población extranjera en España, in *Veinte años de inmigración en España*, edited by E. Aja, J. Arango and J. Oliver. Barcelona: Fundació CIDOB.
- Rees, P. and Kupiszewski, M. 1999. *Internal Migration and Regional Population Dynamics in Europe: a Synthesis*. Strasbourg: Council of Europe Publishing
- Rogers, A. and Henning, S. 1999. The internal migration patterns of the foreign-born and native-born populations in the United States: 1975-80 and 1985-90. *International Migration Review*. 33(2), 403-29.
- Rogers, A. and Willekens, F.J. 1986 (Eds) *Migration and Settlement: a multiregional comparative study*. Boston, Reydell
- United Nations 1993. *Internal Migration of Women in Developing Countries*, New York, United Nations